



las terrazas de
dana
Boutique Lodge & Spa

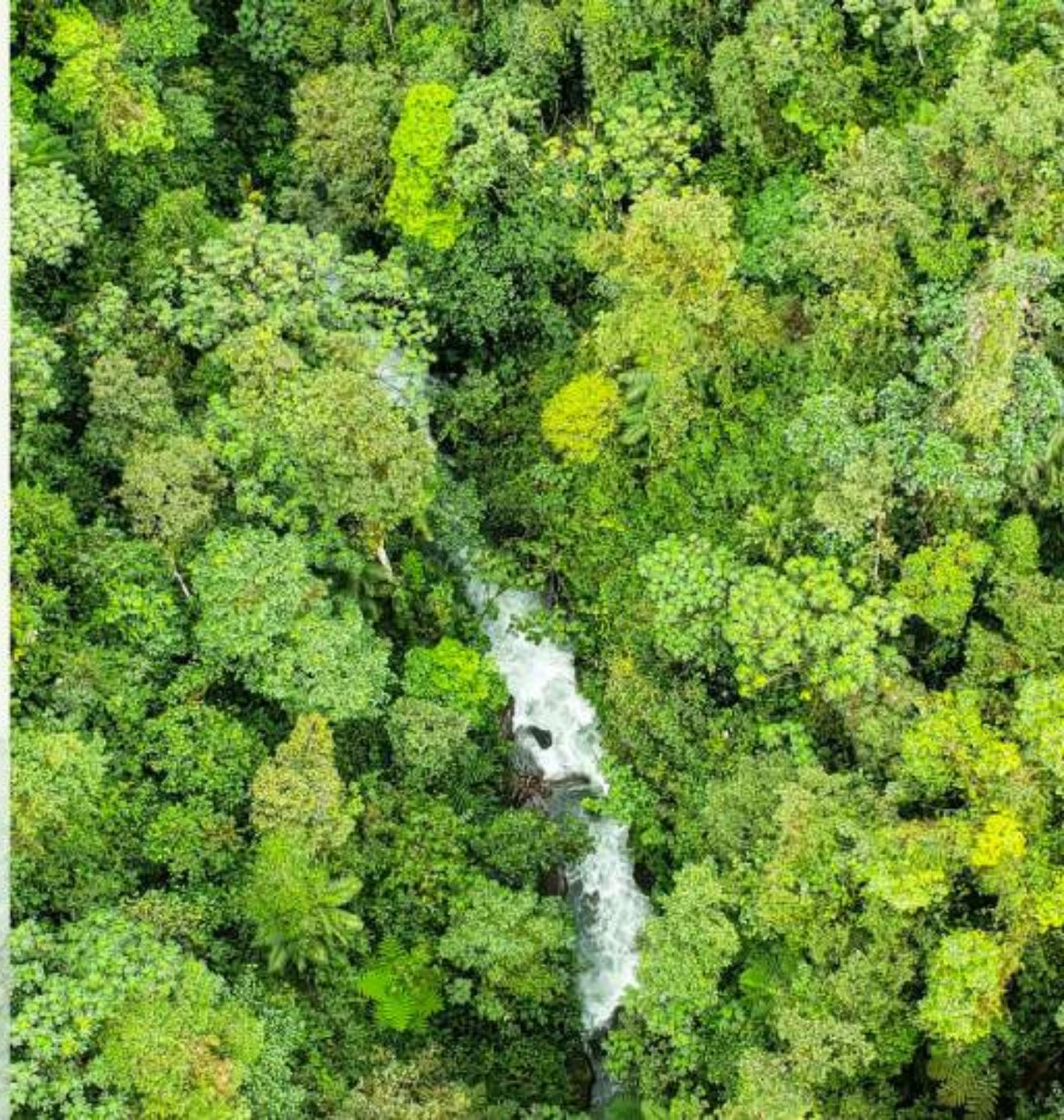


MINDO, THE TOWN AMONG THE CLOUDS

Mindo is a picturesque small town located at the heart of Andean Choco in Pichincha province in Ecuador, a hot biodiversity spot that was declared a Biosphere Reserve on 25 July 2018 by UNESCO.

In pre-Columbian time Mindo was a settlement of the Yumbo and Nigua ethnic groups. The word "Mindo" comes from "Mindala", a term used for indigenous merchants.

Nowadays, Mindo is well-recognized as a biodiversity hotspot, hosting 270 species of mammals including the spectacled bear. In addition, 500 species of birds, including endemic species such as the Toucan of Chocó and covers an altitudinal range from 360 to 4,480 meters in height. It is a safe and bio-diverse place with no tropical diseases and is highly recommended for nature lovers since it has endemic bird species, orchids in their natural stage, and more wildlife to discover Nature's wonders near Quito.





We are delighted to invite you to an extraordinary place to enjoy and relax in one of the best birdwatching and biodiversity hotspots in the world, the Cloud Forest in Mindo at the heart of Andean Choco in Pichincha province in Ecuador.



LOCATION

Mindo town is located northwest of Quito approximately 100 km (62 miles) away. Also, Quito's international airport is located only at 110 km (68 miles) approximately, which may take 2 hours to drive from any of both points.

Our lodge is only 1,2 km (0,8 miles) from Mindo town, in the direction of the Road to the Cable Car also known as the Tarabita, and Sanctuary of Waterfalls. We offer a private shuttle from and to hotels or Quito's airport.



THE LODGE

Our pioneering Boutique - Eco lodge in the area features a sustainable building combining a modern design, the latest technology in metal frame construction, and traditional construction that takes care of the environment. A comfy, exclusive, and unique place at the same time.





Our Main Building, a Bungalow and the Pool





THE EXPERIENCE

We provide our guests with the best services. Imagine all of the luxuries and amenities of a large resort complemented by personalized assistance.





Our goal is also to deliver expert insight into the natural treasures and culture that surround our little piece of heaven on earth.





To maintain this slice of paradise we are focused on maintaining the highest standards of eco-friendly and sustainable tourism to left as small of a footprint as possible.

Also, our local staff and guides share these values and our confidence in the level of service we are committed to providing our guests.





OUR FACILITIES

- Main Building
- Front Desk
- Maywa Restaurant
- Swimming Pool
- Gardens
- Mandragora Relax & Beauty Spa
- Bungalows
- Parking lot



MAIN
BUILDING



THE FRONT DESK

Located in the main building, we will be pleased for greeting guests and assist them with all the Information needed and their requests.





THE MAYWA RESTAURANT

This beautiful dining area with an amazing view of the forest and valley takes its name from the emblematic orchid of Quito "Jamiesonis" or also known as Maywa in the native language. Maywa means purple and is a fairly diverse and common genus of orchids in Ecuador.





THE POOL AREA & GARDENS

The exterior areas of our Lodge have been designed in consonance with this lush green and magical forest. We have a large swimming pool to enjoy the warm humid climate in the midst of nature and relax on the wooden berths surrounded by our carefully tended gardens.



THE MANDRAGORA RELAX & BEAUTY SPA

Our two treatment beautifully decorated rooms are the ideal place to harmonize your mind, body, and soul in combination with the amidst nature that surrounds our lodge plus handmade organic products, elaborated with finest ingredients and by the hand of qualified therapists that will help you relax and regain your vitality, in a warm environment away from the hustle and bustle of the city.



THE BUNGALOWS

We have at your disposition six bungalows with spectacular view of the valley of Mindo featuring two categories and equipped with:

- Private terrace
- Panoramic floor-ceiling windows
- Bathroom with a shower
- Wi-Fi Connection
- Satellite TV in 32"LCD screen
- Safe box deposit
- Queen size beds or two twin beds
- Room service
- Breakfast served at your private terrace
- Complimentary Coffee and tea station at Maywa Restaurant
- Additional extra cost
 - Laundry Service **
 - Relax and Beauty Spa**



DELUXE FAMILY BUNGALOW



Perfect for families or groups.
These spacious bungalows offer the possibility to have adjoining rooms and even share terraces.



Enjoy Al Fresco meals at your private terrace surrounded by nature and birds chirping.



- 2 comfy and luxury suites of 46 sq. m
- Double, triple, and quadruple accommodation up to 3 beds.



LUXURY BUNGALOW WITH SPA BATH



The ideal Bungalow for couples,
families and groups.

Feel surrounded by nature and
enjoy the privacy of these
comfy bungalows.

Enjoy the amazing view of the
valley of Mindo from your
terrace.





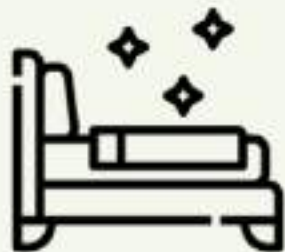
Be delighted by taking a bath in the private jacuzzi in the middle of the amidst nature.

This spacious area was specially designed to offer a great relaxing time after a busy day

- 4 Luxury spacious and comfy suites of 41 sq. m
- Double and triple accommodation up to 2 beds.



WHAT WE CAN DO FOR YOU



Accommodation Only



Birding Photography in Ecuador



Taylor Made Itineraries




Birding Programs in Ecuador



All - Inclusive Packages in
Mindó Cloud Forest



Boutique Lodge & Spa

Made with  in Mindo Cloud Forest

